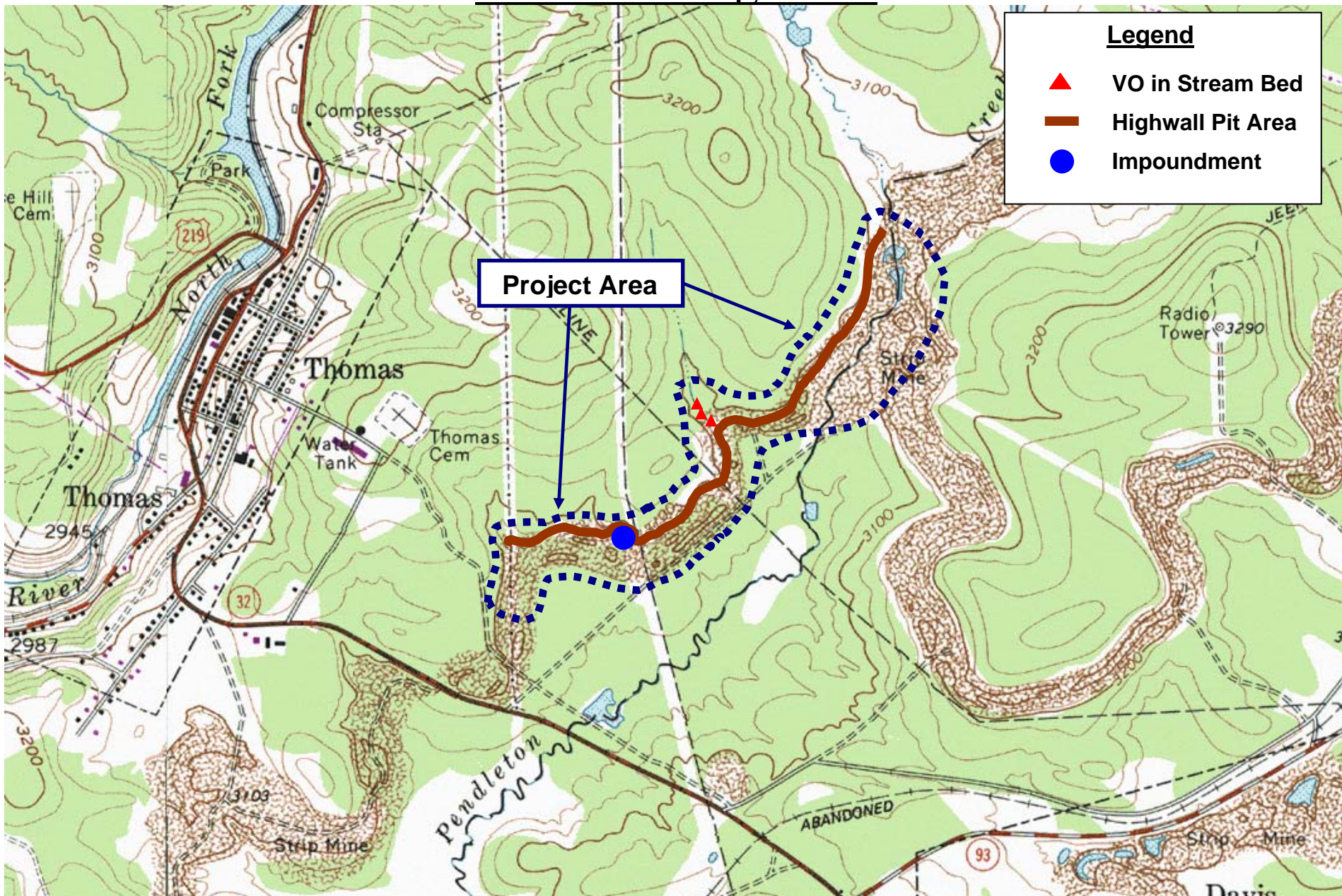


Project Location – Topographic Map
Pendleton Creek Strip; WV-2128



Legend

- ▲ VO in Stream Bed
- Highwall Pit Area
- Impoundment

Davis Quad
Latitude: 39° 08' 42"

Tucker County
Longitude: 79° 28' 55"

Scale: 1 inch = 1,350 Feet